

# Schoolcraft Community Schools



Administration office  
629 East Clay Street  
Schoolcraft, MI 49087  
Phone 269-488-7390  
Fax 269-488-7391  
[www.schoolcraftschools.org](http://www.schoolcraftschools.org)



## Welcome

On behalf of the Board of Education, administration, staff and students I welcome you to Schoolcraft Community Schools. Your interest in discovering more about the educational opportunities our school can provide for your family is greatly appreciated.



This document is intended to provide information to help you in making an informed decision regarding the best educational setting for your children. No document, however, can provide the full flavor of a school building or a school district. Thus, you are invited and encouraged to make an appointment for a visit to our school district. Appointments can be arranged with any member of the administrative team. We would be glad to meet with you.

Schoolcraft Community Schools has a long, proud history of providing quality educational opportunities for students in a supportive, encouraging, safe and inviting environment. Students in the district compare favorably in all performance measures with those in schools throughout the area and the state. The small size of the school population fosters strong connections between teachers, students and parents, which translate into individual attention that is unsurpassed in other school districts. A strong core curriculum coupled with affiliations with regional and state programs provides a breadth of programming opportunities for Schoolcraft students that rival those found in any other school district.

Parents seeking a challenging and varied curriculum delivered by a dedicated professional staff in a positive and safe environment will be well pleased with the Schoolcraft Community Schools.

Thank you for considering us.

Wayne "Rusty" Stitt, Ph.D.  
Superintendent



# District Information

## Schoolcraft Administration

Rusty Stitt..... Superintendent  
 Cythia Stull..... Early Elementary Principal  
 Doug Ryskamp..... Upper Elementary Principal  
 John Vail ..... Middle School Principal  
 John Kolassa..... High School Principal

## Board of Trustees

Michael Rochholz..... Board President  
 Skip Fox Board ..... Vice President  
 Darby Fetzer ..... Board Secretary  
 Kathy Mastenbrook..... Board Treasurer  
 Matt DeVoe..... Board Trustee  
 Jeannette Marshall ..... Board Trustee  
 David Krum..... Board Trustee

## Contact Information

### Official Mailing Address

Schoolcraft Community Schools  
 629 East Clay Street  
 Schoolcraft, MI 49087

### Schoolcraft Early Elementary School

300 East Clay Street  
 Schoolcraft, MI 49087  
 Phone: 269-488-7200  
 Fax: 269-488-7211

### Schoolcraft Upper Elementary

611 East Clay Street Schoolcraft,  
 MI 49087 Phone: 269-488-7250  
 Fax: 269-488-7261

### Schoolcraft Middle School

747 East Clay Street  
 Schoolcraft, MI 49087  
 Phone: 269-488-7300  
 Fax: 269-488-7303

### Schoolcraft High School

551 East Lyons Street  
 Schoolcraft, MI 49087  
 Phone: 269-488-7350  
 Fax: 269-488-7364



## Early Elementary School

The mission of Schoolcraft Early Elementary is to develop capable and responsible learners. The Early Elementary School is



“committed to the belief that all students can achieve mastery of basic grade level skills.” The instructional staff and support staff are focused on the overall development of each child – intellectually, socially, emotionally and

physically.

### Among the features of the Early Elementary are:

- Kindergarten and Young Fives Program
- Paraprofessionals to support classroom instruction
- Computer, media, physical education and vocal music as integral parts of the curriculum
- Strong parental and community involvement
- Parent led “Project Charlie – Peaceful Partners” -- a self-esteem and drug prevention program
- Student Services Program
- Junior Achievement Program
- An active Student Council with an emphasis on Character Education
- Accelerated Reader Program
- Wrap Around – quality yet reasonably priced day care for Y-5 and kindergarten students
- Latchkey – before and after school day care for students Y-5 through 6<sup>th</sup> grade





# Upper Elementary School

Schoolcraft Upper Elementary is “committed to shared responsibility between parents and teachers to help students



become productive, educated individuals who show respect and concern for others.” The Upper Elementary houses grades 3 through 5. There are approximately 257 students in the Upper Elementary building.

## Among the features of the Upper Elementary are:

- Self contained classrooms 3-5
- Media Center Instruction
- Exploratory experiences for all students in computer, physical education and music
- School wide Accelerated Reader Program
- Project Charlie for 3<sup>rd</sup> & 4<sup>th</sup> grades
- Student Council
- Junior Achievement Program
- Science labs available to all grades
- Keyboarding Instruction
- Two networked computer labs available for classroom use
- Guidance and student support programs





## Middle School

Schoolcraft Middle School is committed to serving the needs of its students through programming that strives to promote academic



excellence, developmental responsiveness, personal responsibility, age appropriate experiences and social equity. A skilled staff delivers a challenging, integrated curriculum in a positive and safe environment.

### Among the features of the middle school are:

- Camping and outdoor education programs
- Computer labs incorporating technology into classroom instruction
- After-school Study Lab program
- Interscholastic athletics for both boys and girls
- Media center to support classroom instruction
- Instrumental music programs
- Vocal music programs
- Spanish instruction
- Year-long physical education





# High School

Schoolcraft High School, is “committed to providing all students the opportunity to reach their maximum potential through



academic and social challenges with the goal of becoming responsible and productive members of society.”

Approximately 400 students are served in grades nine through twelve.

## Features of the high school program include:

- Guidance services
- A career pathways approach to academic program planning
- Instrumental music program
- Student drama productions each semester
- Extensive interscholastic athletic program
- Vocal music program
- Media center fully networked and internet connected
- Active student leadership organizations
- Education for the Arts regional programming
- Education for Employment regional programming
- Affiliation with Kalamazoo Area Math and Science Center
- Connectivity with Michigan Virtual High School
- Opportunities for dual enrollment in college coursework for all students
- A state of the art physical facility





## Student Testing Results-MEAP

Students in the third through eighth grade annually participate in the State of Michigan Educational Assessment program (MEAP). This program assesses the rate of accomplishment and essential skills for students throughout the state. Traditionally, scores achieved by Schoolcraft students exceed scores of the average state student and typically rank near the top of the schools in southwestern Michigan in all categories.

### 3rd Grade MEAP

|                | 2006       | 2007       | 2008       | 2009       | 2010       |
|----------------|------------|------------|------------|------------|------------|
| <b>Math</b>    | <b>94%</b> | <b>93%</b> | <b>98%</b> | <b>97%</b> | <b>98%</b> |
| <b>(State)</b> | <b>88%</b> | <b>n/a</b> | <b>91%</b> | <b>95%</b> | <b>95%</b> |
| <b>Reading</b> | <b>96%</b> | <b>99%</b> | <b>99%</b> | <b>97%</b> | <b>98%</b> |
| <b>(State)</b> | <b>87%</b> | <b>n/a</b> | <b>86%</b> | <b>90%</b> | <b>87%</b> |
| <b>Writing</b> | <b>54%</b> | <b>65%</b> | <b>84%</b> | <b>n/a</b> | <b>n/a</b> |
| <b>(State)</b> | <b>52%</b> | <b>n/a</b> | <b>61%</b> | <b>n/a</b> | <b>n/a</b> |
| <b>ELA</b>     | <b>93%</b> | <b>94%</b> | <b>99%</b> | <b>n/a</b> | <b>n/a</b> |
| <b>(State)</b> | <b>79%</b> | <b>n/a</b> | <b>83%</b> | <b>n/a</b> | <b>n/a</b> |

### 4<sup>th</sup> Grade MEAP

|                | 2006       | 2007       | 2009       | 2010        | 2011       |
|----------------|------------|------------|------------|-------------|------------|
| <b>Math</b>    | <b>98%</b> | <b>99%</b> | <b>98%</b> | <b>100%</b> | <b>95%</b> |
| <b>(State)</b> | <b>85%</b> | <b>n/a</b> | <b>88%</b> | <b>92%</b>  | <b>91%</b> |
| <b>Reading</b> | <b>97%</b> | <b>99%</b> | <b>99%</b> | <b>96%</b>  | <b>95%</b> |
| <b>(State)</b> | <b>85%</b> | <b>n/a</b> | <b>83%</b> | <b>84%</b>  | <b>84%</b> |
| <b>Writing</b> | <b>53%</b> | <b>63%</b> | <b>57%</b> | <b>n/a</b>  | <b>57%</b> |
| <b>(State)</b> | <b>45%</b> | <b>n/a</b> | <b>44%</b> | <b>n/a</b>  | <b>47%</b> |
| <b>ELA</b>     | <b>92%</b> | <b>98%</b> | <b>98%</b> | <b>n/a</b>  | <b>n/a</b> |
| <b>(State)</b> | <b>78%</b> | <b>n/a</b> | <b>77%</b> | <b>n/a</b>  | <b>n/a</b> |

In compliance with P.A. 25 and No Child Left Behind requirements



# Student Testing Results-MEAP

## 5<sup>th</sup> Grade MEAP

|                | 2006 | 2007 | 2008 | 2009 | 2010 |
|----------------|------|------|------|------|------|
| <b>Math</b>    | 89%  | 83%  | 93%  | 90%  | 85%  |
| <b>(State)</b> | 76%  | 86%  | 77%  | 79%  | n/a  |
|                |      |      |      |      |      |
| <b>Reading</b> | 96%  | 96%  | 99%  | 96%  | 98%  |
| <b>(State)</b> | 84%  | 84%  | 82%  | 85%  | 85%  |
|                |      |      |      |      |      |
| <b>Writing</b> | 77%  | 63%  | 98%  | n/a  | n/a  |
| <b>(State)</b> | 57%  | 44%  | 63%  | n/a  | n/a  |
|                |      |      |      |      |      |
| <b>ELA</b>     | 91%  | 98%  | 98%  | n/a  | n/a  |
| <b>(State)</b> | 78%  | 76%  | 78%  | n/a  | n/a  |
|                |      |      |      |      |      |
| <b>Science</b> | 91%  | 94%  | 93%  | 85%  | 97%  |
| <b>(State)</b> | 83%  | n/a  | 83%  | 81%  | 78%  |

## 6<sup>th</sup> Grade MEAP

|                       | 2006 | 2007 | 2008 | 2009 | 2010 |
|-----------------------|------|------|------|------|------|
| <b>Math</b>           | 81%  | 83%  | 89%  | 91%  | 92%  |
| <b>(State)</b>        | 69%  | 74%  | 80%  | 82%  | 84%  |
|                       |      |      |      |      |      |
| <b>Reading</b>        | 93%  | 96%  | 91%  | 98%  | 99%  |
| <b>(State)</b>        | 83%  | 82%  | 81%  | 88%  | 84%  |
|                       |      |      |      |      |      |
| <b>Writing</b>        | 86%  | 78%  | 88%  | n/a  | n/a  |
| <b>(State)</b>        | 74%  | 59%  | 76%  | n/a  | n/a  |
|                       |      |      |      |      |      |
| <b>ELA</b>            | 89%  | 94%  | 90%  | n/a  | n/a  |
| <b>(State)</b>        | 78%  | 78%  | 80%  | n/a  | n/a  |
|                       |      |      |      |      |      |
| <b>Social Studies</b> | 87%  | 91%  | 89%  | 88%  | 89%  |
| <b>(State)</b>        | 74%  | n/a  | 74%  | 73%  | 75%  |



# Student Testing Results-MEAP

## 7<sup>th</sup> Grade MEAP

|                | 2006 | 2007 | 2008 | 2009 | 2010 |
|----------------|------|------|------|------|------|
| <b>Math</b>    | 76%  | 77%  | 91%  | 91%  | 93%  |
| <b>(State)</b> | n/a  | n/a  | 83%  | 82%  | 85%  |
|                |      |      |      |      |      |
| <b>Reading</b> | 89%  | 85%  | 95%  | 92%  | 93%  |
| <b>(State)</b> | n/a  | n/a  | 80%  | 82%  | 79%  |
|                |      |      |      |      |      |
| <b>Writing</b> | n/a  | n/a  | n/a  | n/a  | 45%  |
| <b>(State)</b> | n/a  | n/a  | n/a  | n/a  | 48%  |
|                |      |      |      |      |      |

## 8<sup>th</sup> Grade MEAP

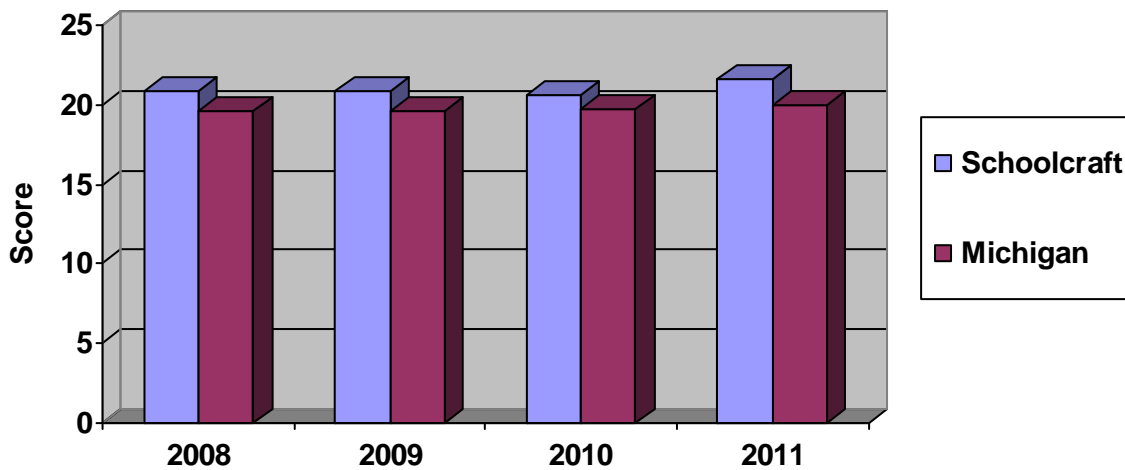
|                | 2006 | 2007 | 2008 | 2009 | 2010 |
|----------------|------|------|------|------|------|
| <b>Math</b>    | 75%  | 79%  | 74%  | 82%  | 82%  |
| <b>(State)</b> | n/a  | n/a  | 75%  | 70%  | 78%  |
|                |      |      |      |      |      |
| <b>Reading</b> | 81%  | 83%  | 84%  | 89%  | 90%  |
| <b>(State)</b> | n/a  | n/a  | 76%  | 83%  | 82%  |
|                |      |      |      |      |      |
| <b>Science</b> | 79%  | 87%  | 82%  | 88%  | 89%  |
| <b>(State)</b> | n/a  | n/a  | 76%  | 76%  | 78%  |



## Student Testing Results-ACT

Many Schoolcraft High School students participate in the American College Testing Program, a key factor in college admission and a predictor of success in the college experience. Historically, Schoolcraft students have performed well above the average student throughout Michigan.

### ACT Scores



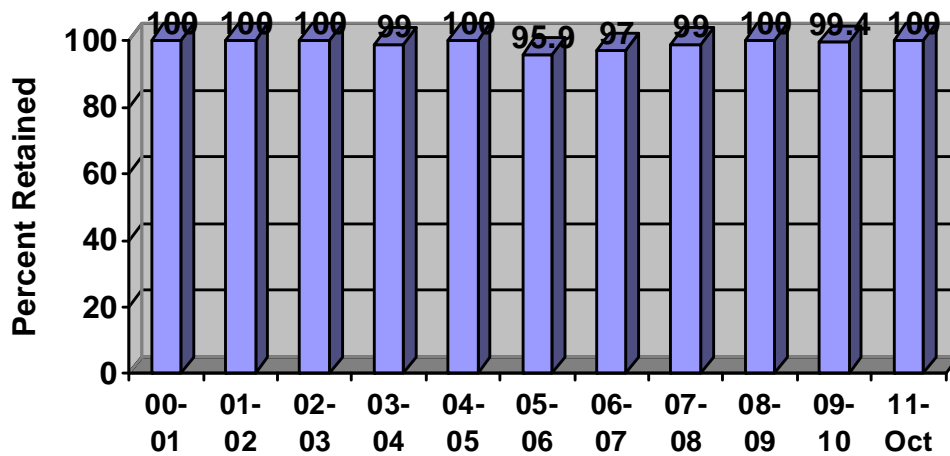
| Year | Schoolcraft Average | State Average |
|------|---------------------|---------------|
| 2008 | 20.8                | 19.6          |
| 2009 | 20.9                | 19.6          |
| 2010 | 20.6                | 19.7          |
| 2011 | 21.6                | 20.0          |



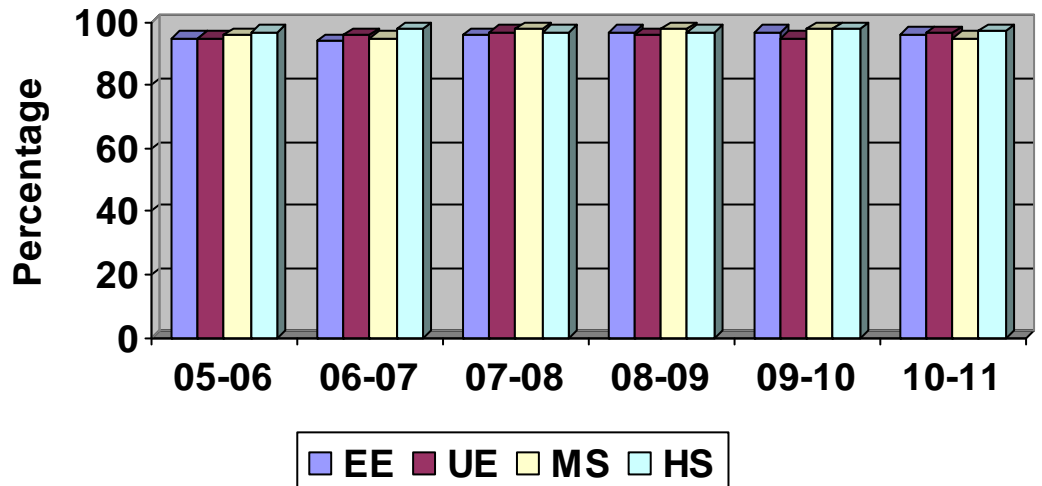
# Student Body

Schoolcraft students recognize the value of a good education, as demonstrated by outstanding student retention rates as well as exemplary daily student attendance rates.

## Student Retention



## Average Daily Attendance



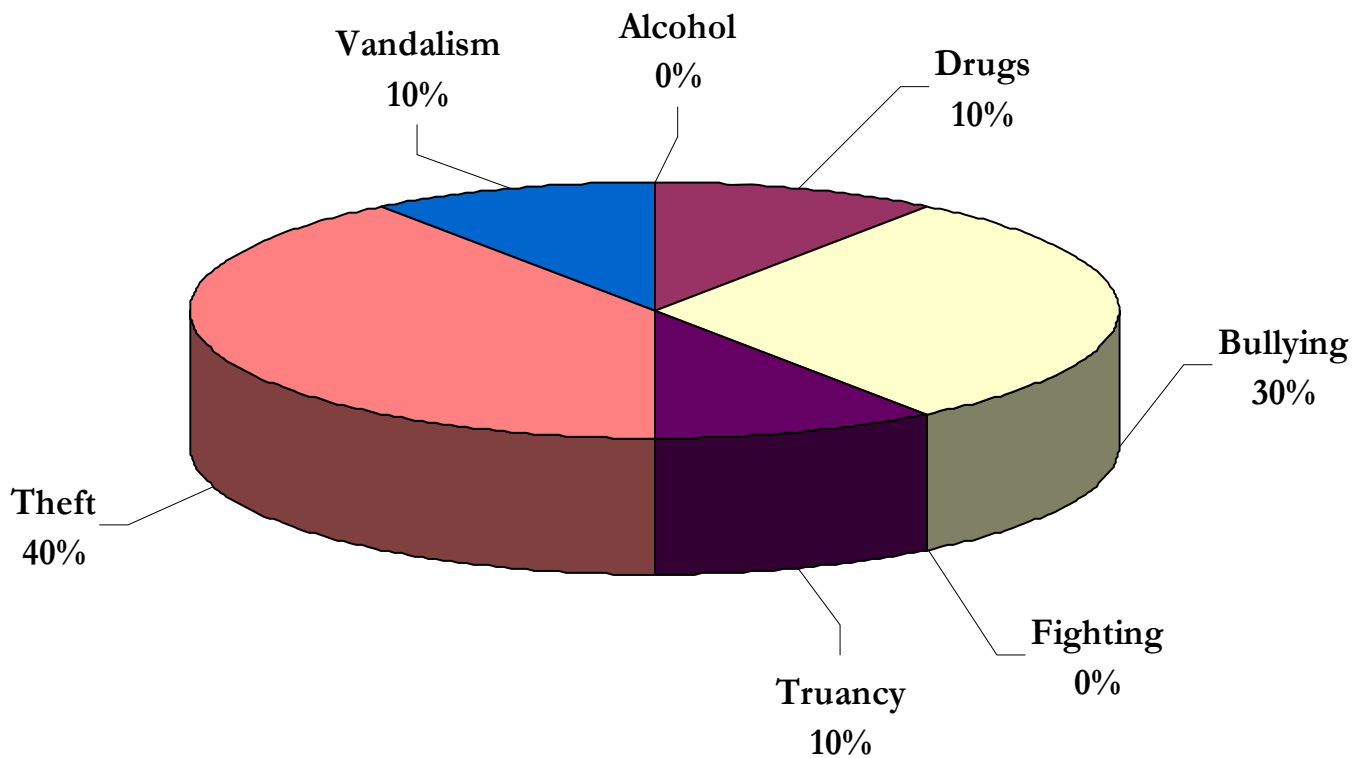


# Student Body

Schoolcraft Schools take great pride in the orderly environment that exists in all school buildings, a key factor in promoting student success. As the chart below indicates, there were very few incidents of significant misbehavior during the 2008-2009 and 2009-2010 school years.

| Year  | Alcohol | Drugs | Bullying | Fighting | Truancy | Theft | Vandalism |
|-------|---------|-------|----------|----------|---------|-------|-----------|
| 09-10 | 0       | 0     | 6        | 4        | 3       | 5     | 1         |
| 10-11 | 0       | 1     | 3        | 0        | 1       | 4     | 1         |

## District Wide Misconduct 2009-2010



In compliance with P.A. 25 and No Child Left Behind requirements



## Programs for All Students

| Activities  | Early Elementary | Upper Elementary | Middle School | High School |
|---|------------------|------------------|---------------|-------------|
| Co-Curricular Clubs (French Club, Spanish Club, Chess Club, Art Club, Common Bond, etc.)<br>Science Club                    |                  |                  | x             | x           |
| Community Service Projects (Toys for Tots, Can Do Drive, Senior Citizens Holiday Activities, American Cancer Society, etc.) | x                | x                | x             | x           |
| Diversity Programs  |                  |                  |               | x           |
| Theatrical Productions  |                  |                  |               | x           |
| Drug Free Schools Programs  | x                | x                | x             | x           |
| Interscholastic Athletics   |                  |                  | x             | x           |
| Instrumental Music Programs   |                  | x                | x             | x           |
| Junior Achievement Program  | x                | x                |               | x           |
| Musical Production  |                  |                  |               | x           |
| National Honor Society  |                  |                  |               | x           |
| Student Citizenship Programs  | x                | x                | x             | x           |
| Student Leadership Programs   | x                | x                | x             | x           |
| Vocal Music Programs  | x                | x                | x             | x           |
| Yearbook  | x                | x                | x             | x           |
| Visual Arts Programs  | x                | x                | x             | x           |

In compliance with P.A. 25 and No Child Left Behind requirements



## Facilities and Staff

The Schoolcraft Community School District houses students in buildings consisting of the Early Elementary, Upper Elementary, Middle School and our High School building. Along with clean, inviting, brightly lit classrooms in every building, the district features the Performing Arts Center, four gymnasiums, a multi-purpose room, outdoor sports facilities, safe playgrounds, great kitchens, computer labs, science labs, art rooms, weight room and well-stocked libraries for every building.

All district facilities are in excellent condition due to an outstanding maintenance staff and great community support. These facilities provide a superb learning environment for our students' educational experience.

### Professional Staff

All professional staff members are highly qualified and fully certified in their curricular areas. The professional staff of Schoolcraft Community Schools has been instructing students for an average of almost 15 years.

| <b>Staff Classifications</b>                                     | <b>Number of staff</b> | <b>Percentage</b> |
|--|------------------------|-------------------|
| Number of Professional Instructional Staff                       | 59                     | 100%              |
| Number of Professional Staff teaching in area of certification   | 59                     | 100%              |
| Number of Professional Instructional Staff with Bachelors Degree | 14                     | 35.8%             |
| Number of Professional Instructional Staff with Masters Degree   | 45                     | 64.1%             |



## Interscholastic Athletics

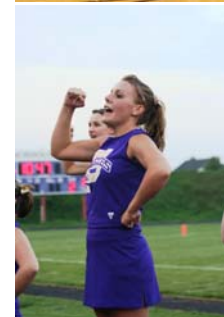
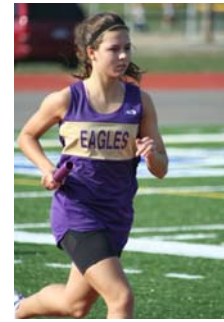
The performance of our student athletes is a great source of pride in Schoolcraft. Participation rate is outstanding and athletic performances are excellent. Nearly 80% of all graduating seniors have participated in at least one sport during their high school careers.



Interscholastic athletics are well supported by the community. Student athletes are expected to perform their best on the field, in the classroom, and in the community – our athletes are leaders.

Schoolcraft is a member of the Kalamazoo Valley Association for athletics. In the past few years the district athletic program has earned many league sportsmanship awards. Schoolcraft Community Schools holds these accomplishments in very high esteem.

Recent Schoolcraft teams and athletes have earned State Championships in volleyball, football, golf and cross country. The district has held Regional Championships in football, competitive cheer, cross country, golf, men's track, and women's track. SCS has also held league or District Championships in football, men's basketball, women's basketball, golf, competitive cheer, cross country, men's track, women's track, volleyball, baseball and softball.





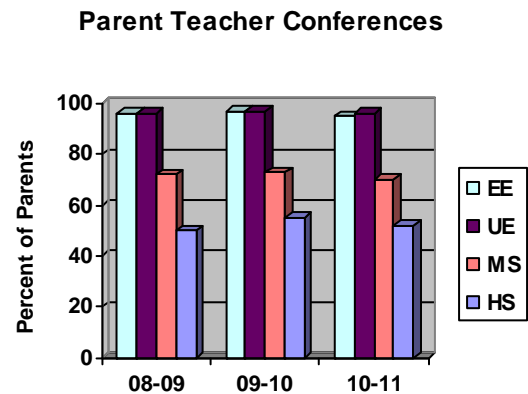
## Parent Involvement

Family support is the heart of student success, and parental participation is an essential part of the learning process in each Schoolcraft School. Teachers and administrators welcome opportunities to involve parents and families. Parents are invited to become active in their children's education beginning with Kindergarten and continuing through high school graduation. Parents are encouraged to stay connected and involved in the educational process through opportunities such as parent/teacher conferences and parent/child activities.

Volunteer opportunities are boundless for parents and community members at the individual schools, and each parent is encouraged to become involved in these activities to help us provide quality services for our children.

Parents become comfortable with the staff and the educational process through their child's early years. By the time our students reach high school, a strong relationship has been established with parents which promotes an equally strong foundation of community support.

Schoolcraft Middle and High School offers a 'Parent Internet Viewer' for parent's access of their student's academic information. This is available for all parents of students in 6<sup>th</sup> through 12<sup>th</sup> grades. Through a home Internet connection with a private PIN number and Password, a parent can view their student's academic performance at any time.





## Community Support

---

The community of Schoolcraft is an extremely positive and supportive one. The community is very proud of the students who make up Schoolcraft Community Schools. The community supports and recognizes all the achievements of our students. Schoolcraft was the first settlement in the Kalamazoo area back in 1831. The early settlers were drawn to this area because of the fertile lands, which are still being farmed today.

The community of Schoolcraft is conveniently located adjacent to Kalamazoo and Portage, just 5 minutes south of the US 131/I-94 interchange. With unlimited access to US 131, Schoolcraft residents enjoy a quick, relaxing twenty minute drive to downtown Kalamazoo. Shopping malls, restaurants, theaters, medical facilities, Western Michigan University, Kalamazoo College, Davenport College and Kalamazoo Valley Community College can all be reached in fifteen minutes or less.

Residents of Schoolcraft have the best of both worlds – access to all of the amenities of life, combined with safe, quiet, wholesome small town living.

The village features many thriving businesses, including restaurants and unique shopping establishments with an emphasis on antiques and collectibles.